



**APPROVAL SHEET**  
**FOR**  
**PIEZO BUZZER**

***ILOSAM ELECTRONICS CO., LTD.***

CLUE No.:

MODEL NUMBER: ISP-1625

OUR PART No.:

DOCUMENT No.:

CUSTOMER	APPROVED	CHECKED

CLUE NO:	Specification for Piezoelectric Ceramic Buzzer SMD Type		Des.	Page 2 of 8
			Wang Min	Update/2017-7-29
Model No.: ISP-1625		P/N:	Chk.	Apr.
			Jiang Yin	

## 1. Document revision history

[illegible]

CLUE NO:	Specification for Piezoelectric Ceramic Buzzer SMD Type	Des.	Page 3 of 8
		Wang Min	Update/2017-7-29
Model No.: ISP-1625	P/N:	Chk.	Apr.
		Jiang Yin	

## 2. Technical Parameter Measuring condition

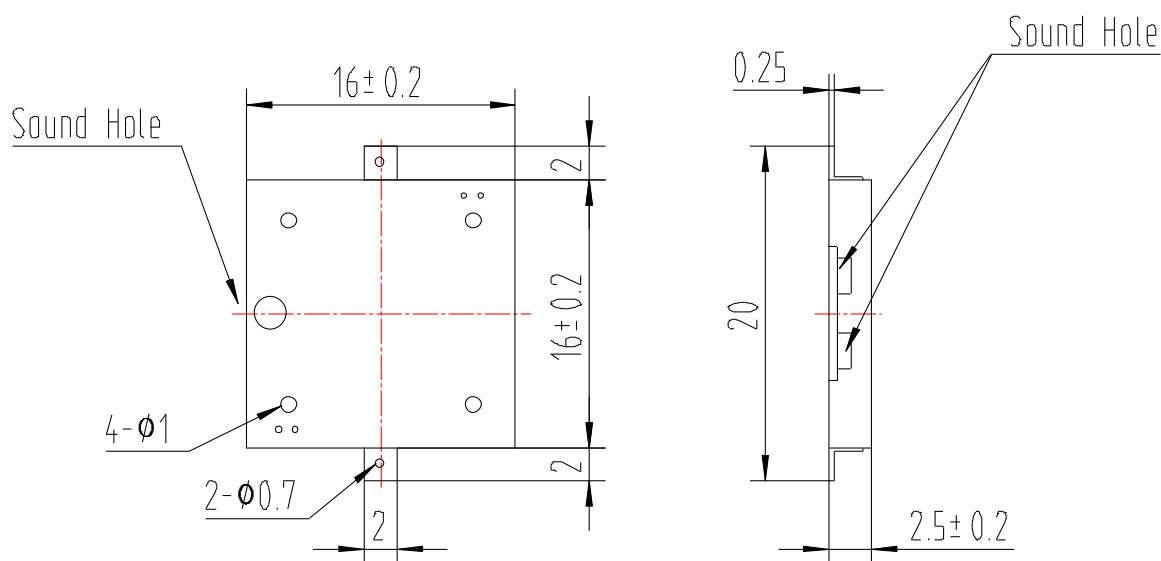
Part shall be measured under a condition (Temperature: 5~35℃, Humidity: 45%~85%R.H., Atmospheric pressure: 860 ~1060hPa) unless the standard condition (Temperature: 25±3℃, Humidity: 60±10%R.H. Atmospheric pressure: 860 ~1060hPa) is regulated to measure.



1	Resonant Frequency	4000±500Hz
2	Operating Voltage	1~25 Vp-p
3	Rated Current	Max.5mA , At 4KHz 50% duty Square Wave 9Vp-p
4	Sound Output at 10cm	Min. 80dB, At 4KHz 50% duty Square Wave 9Vp-p
5	Capacitance	14000±30% pF At 1KHz
6	Operating Temperature	-30℃~+70℃
7	Store Temperature	-40℃~+85℃
8	Net Weight	Approx 1g
9	RoHS	Yes

## 3. Dimensions

Unit: mm



\*Unit: mm; Tolerance: ±0.5mm Except Specified

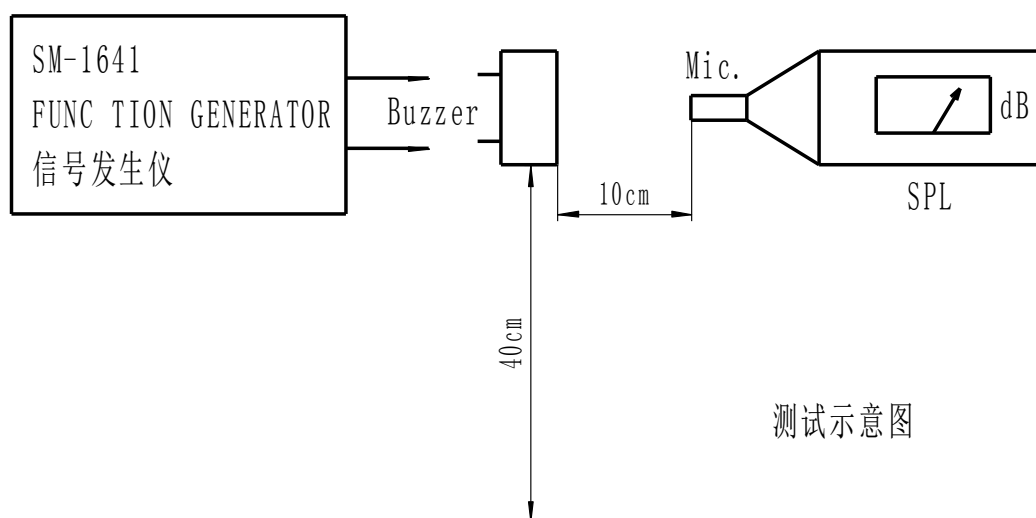
\*Housing Material: Black LCP

\*Terminal plate: 2 soldering pads, tin Plating Brass

CLUE NO:	<b>Specification for Piezoelectric Ceramic Buzzer SMD Type</b>	Des.	Page 4 of 8
		Wang Min	Update/2017-7-29
<b>Model No.: ISP-1625</b>	P/N:	Chk.	Apr.
		Jiang Yin	

#### 4. Electrical And Acoustical Measuring Condition

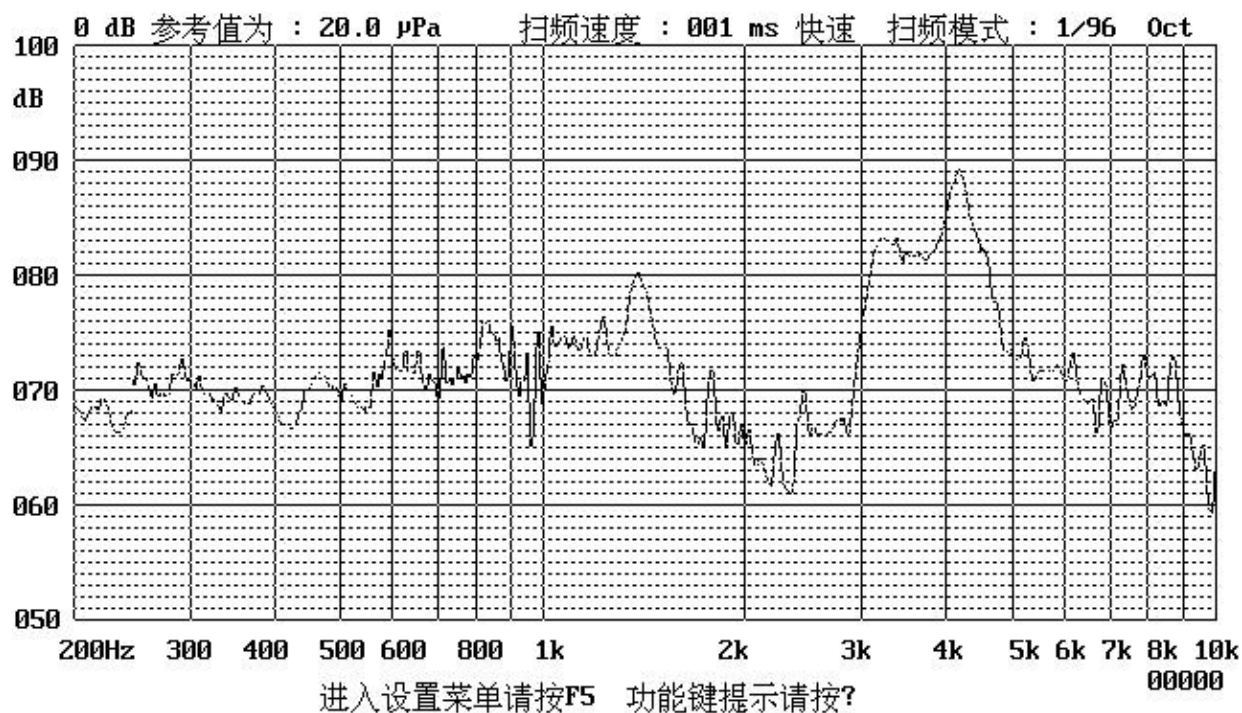
##### Recommended Setting



测试示意图

CLUE NO:	Specification for Piezoelectric Ceramic Buzzer SMD Type	Des.	Page 5 of 8
		Wang Min	Update/2017-7-29
Model No.: ISP-1625	P/N:	Chk.	Apr.
		Jiang Yin	

## 5. Frequency Response



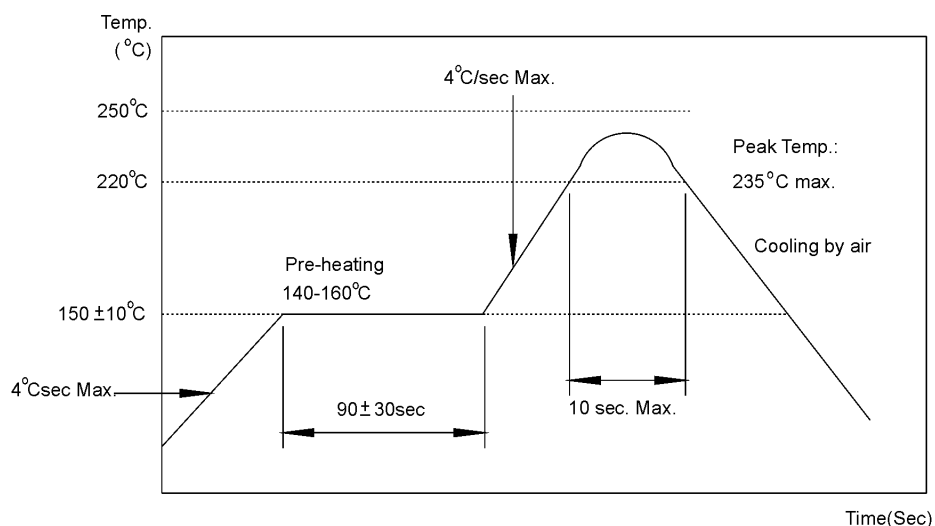
9Vp-p 50% duty Square wave, 10cm

CLUE NO:	Specification for Piezoelectric Ceramic Buzzer SMD Type	Des.	Page 6 of 8
		Wang Min	Update/2017-7-29
Model No.: ISP-1625	P/N:	Chk.	Apr.
		Jiang Yin	

## 6. Surface mounting condition

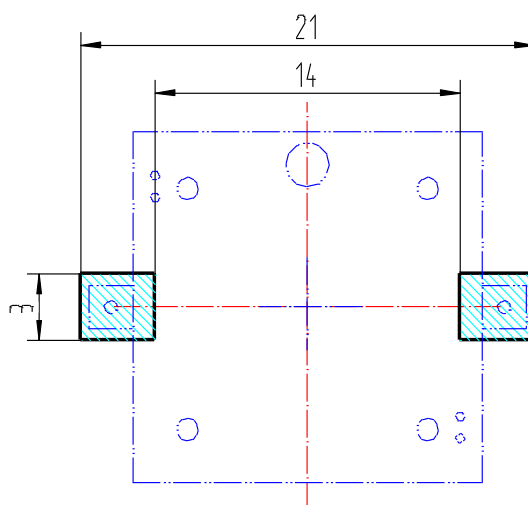
### 6.1 Reflow soldering

Recommendable reflow soldering condition is as follows.



**Note:** (1) In automated mounting of the SMD sound transducers on PCB, any bending, expanding and pulling forces or shocks against the SMD sound transducers shall be kept minimum to prevent them from electrical failures and mechanical damages of the devices.  
(2) In the reflow soldering, too high soldering temperatures and too large temperature Gradient such as rapid heating or cooling may cause electrical failures and mechanical damages of the devices.

### 6.2 Soldering pattern



CLUE NO:	<b>Specification for Piezoelectric Ceramic Buzzer SMD Type</b>	Des.	Page 7 of 8
		Wang Min	Update/2017-7-29
<b>Model No.: ISP-1625</b>	P/N:	Chk.	Apr.
		Jiang Yin	

## 7. Reliability Test

After any following tests the part shall meet specifications without any degradation in appearance and performance except SPL. SPL shall not deviate more than -10 dB from the initial value

### 7.1 Ordinary Temperature Life Test

The part shall be subjected to 96 hours at  $25 \pm 10^{\circ}\text{C}$ . Input rated voltage  
Resonant frequency, 1/2 duty Square wave.

### 7.2 High Temperature Test

The part shall be capable of with standing a storage temperature of  $+85^{\circ}\text{C}$  for 96 hours.

### 7.3 Low Temperature Test

The part shall be capable of with standing a storage temperature of  $-40^{\circ}\text{C}$  for 96 hours.

### 7.4 Humidity Test

Temperature:  $+40^{\circ}\text{C} \pm 3^{\circ}\text{C}$  Relative Humidity: 90%~95% Duration: 48 hours  
and expose to room temperature for 6 hours

### 7.5 Temperature Shock Test

Temperature:  $60^{\circ}\text{C}$  /1hour  $\rightarrow$   $25^{\circ}\text{C}$ /3hours  $\rightarrow$   $-20^{\circ}\text{C}$ /1hour  $\rightarrow$   $25^{\circ}\text{C}$ /3hours (1cycle)  
Total cycle: 10 cycles

### 7.6 Drop Test

Standard Packaging From 75cm (Drop on hard wood or board of 5cm thick, three sides, six plain.)

### 7.7 Vibration Test

Vibration: 1000cycles /min. Amplitude: 75cm, Duration: 1 hour in each 3 axes

### 7.8 Reflow Test

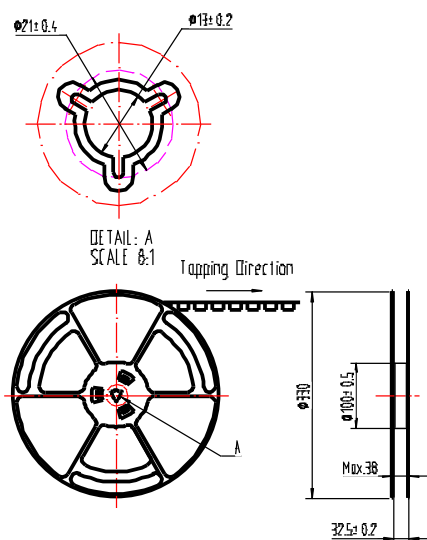
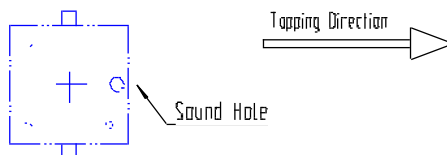
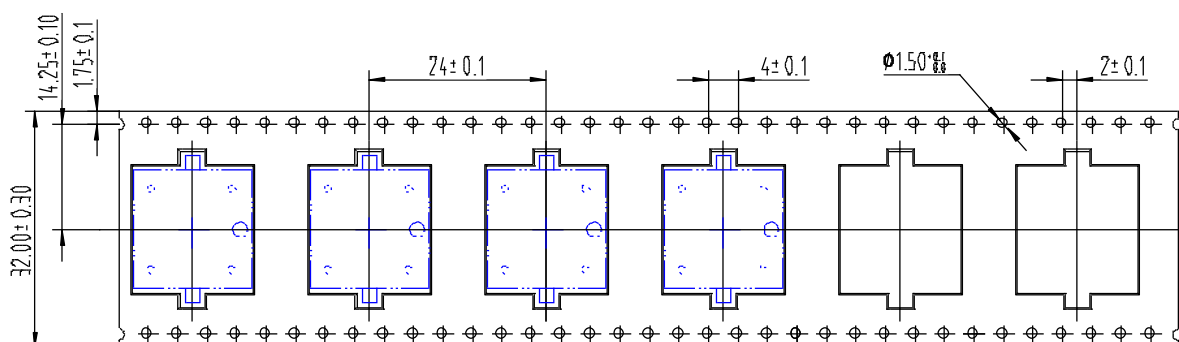
Use recommendable reflow soldering condition (as shown in 5.1)

- (1) No abnormality should be found after reflow
- (2) Good soldering to meet soldering requirements

CLUE NO:	Specification for Piezoelectric Ceramic Buzzer SMD Type	Des.	Page 8 of 8
		Wang Min	Update/2017-7-29
Model No.: ISP-1625	P/N:	Chk.	Apr.
		Jiang Yin	

## 8. Packing

包装要求	1.用 BP1625S 载带 800PCS/盘 料号: F6-S16251 2.内箱用 77*46.5 料号: F6-053 3.外箱用 35*32*36 料号: F6-005
唛头要求	



Label  
P/N:  
Model No.: BP1625S-4001  
Qty.: 800pcs  
Lot No.: XXXX

